

Technical manual Mounting Instructions

BR5010



CHARACTERISTICS

The Bravo is a top reading electronic entry unit that provides easy operation for under-desk safes as well as spy protection. The numbers can only be read up close by the operator. The code numbers will not be "spied on" from a distance. The entry unit features a terminal for an electronic key and/or audit. The integrated battery compartment in the bottom of the Bravo entry unit opens by moving a slider. Cable length is approximately 30 cm. The Bravo entry can be mounted as stationary or turnable model.

DIMENSIONS / MOUNTING INSTRUCTIONS

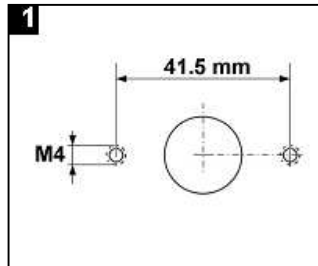


The terminal for the electronic key (Dallas Key) and or communication is located on the front next to the LED. In case this terminal is not required, it should be covered with the provided round black label.

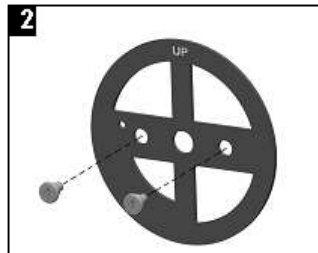
This mounting instruction is part of VdS certification and has to be followed up precisely.

STATIONARY MOUNTING:

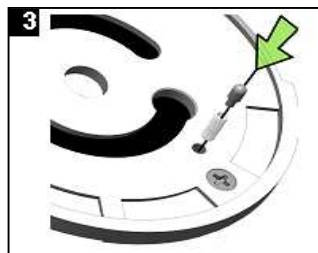
The diameter of the cable hole should be minimum 9 mm, maximum 12 mm. The hole must be de-burred well to avoid damage to the cable.



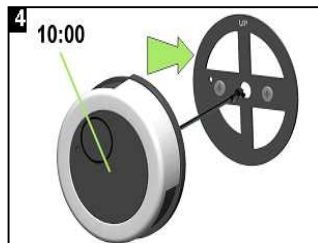
Prepare the mounting and cable holes according to picture



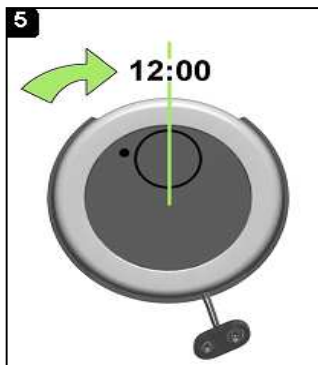
Hold the bearing plate in a way against the mounting surface that "UP" is readable on top. Affix the plate with the two mounting adapter screws (M4) hand tied.



Insert first the spring and then the pin into the hole on the back cover



Route the cable through the cable hole, hold the unit at the (approximately) 10:00 o'clock position and slide it on the mounting adapters.



Turn unit clockwise until it clicks into a stationary position at 12:00.

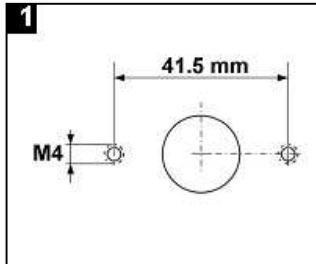
The Bravo entry unit can now not be removed after installation!

Connect one (1) battery to the battery clip. Only use 9V ALKALINE Duracell/ Procell- or Energizer batteries.

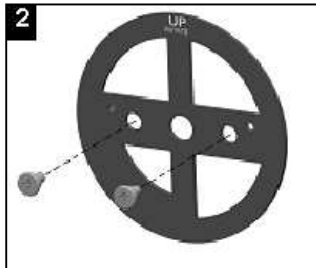
This mounting instruction is part of VdS certification and has to be followed up precisely.

As TURNABLE ENTRY UNIT with M- LOCKS StraightBolt lock EM3520:

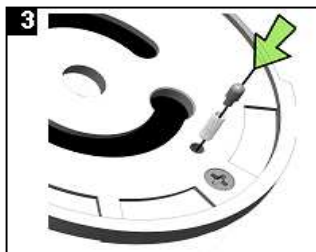
The diameter of the cable hole should be minimum 9 mm, maximum 12 mm. The hole must be de-burred well to avoid damage to the cable. Cut the grooved shaft to the appropriate length: Measure door thickness (from mounting surface of the entry unit to the mounting surface of the lock) and add **41,5 mm** (1.6").



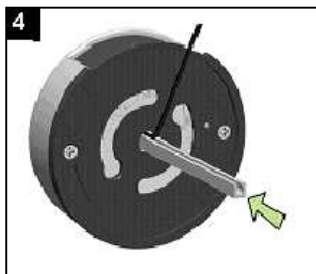
Prepare the mounting and cable holes according to picture



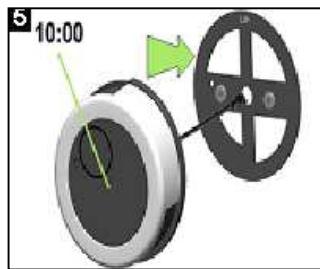
Hold the bearing plate in a way against the mounting surface that "UP ROTATE" is readable on top. Affix the plate with the two mounting adapter screws (M4) hand tied.



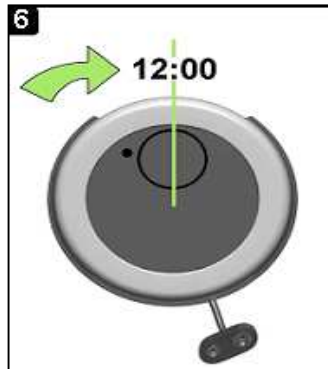
Insert first the spring and then the pin into the hole on the back cover



Insert the grooved shaft all the way into the entry housing



Route the cable through the cable hole, hold the unit at the (approximately) 10:00 o'clock position and slide it on the mounting adapters.



Turn unit clockwise until it clicks into a stationary position at 12:00.

The Bravo entry unit will not be detachable once the lock is installed.

Connect one (1) battery to the battery clip. Only use 9V ALKALINE Duracell/ Procell- or Energizer batteries.

This mounting instruction is part of VdS certification and has to be followed up precisely.