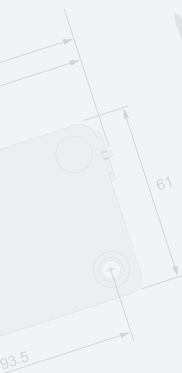


M•LOCKS

**Motor lock
EM2510 DX
EM3010 DX**

**Mounting
instructions
VO4 EN**



M•LOCKS BV

Vlijtstraat 40 • 7005 BN Doetinchem • The Netherlands • www.m-locks.com

EM2510 DX / EM3010 DX



1 IMPORTANT INSTRUCTIONS

- Before mounting the lock, please read the instructions for use carefully.
- The instructions for use only relate to the lock itself and not to how to operate the safe.
- Our products fulfil the EN1300 requirements regarding resistance against electrostatic charge. In fact it may happen that the electrostatic charge of a user exceeds the extreme value many times. That's why we are asking you to touch the metal surface of the safe for discharging before operating the lock.

Caution!

- The lock has been designed for use in a temperature range from +10°C to +50°C and a non-condensing humidity range from 30% to 80%.
- It may only be cleaned with a moist cloth (do not use aggressive cleaning agents).
- The lock may only be installed by qualified fitters.
- The lock may not be lubricated.
- Never open the lock housing. If it is necessary to disassemble the hardware, only do so in accordance with the technical instructions. If you fail to do so, the lock may no longer function properly and you will forfeit your right to warranty.

2 CHARACTERISTICS

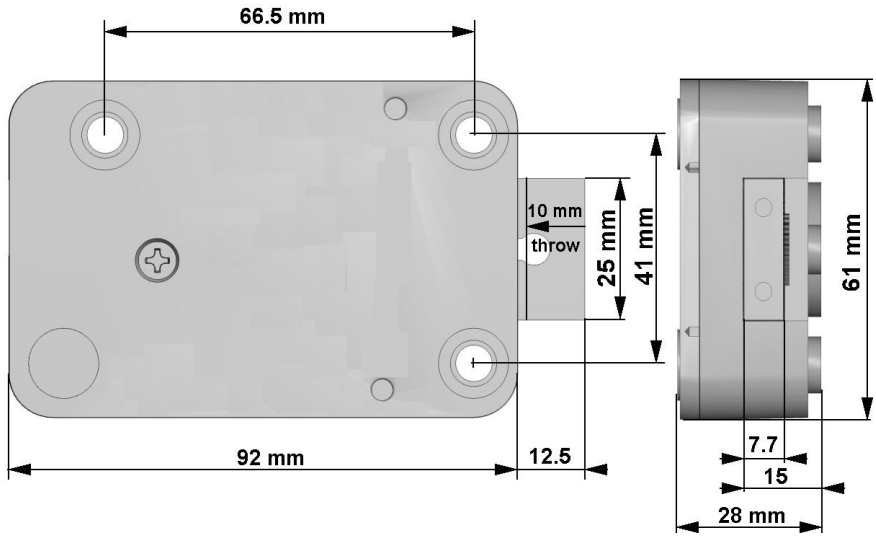
The DirectXion Motorlock can be mounted in all four mounting directions. The mounting dimensions are standard. The lock is delivered with metric (M6) mounting screws.

The PCB board in this lock is intended as an OEM solution for customers who would like to control the lock via their own electronics.

To open the automatically closing version, **EM2510 DX**, 9V has to be applied to the signal lead. As soon as the 9V signal is removed the lock will open. After approx. 7 seconds this version will close.

The Push To Close (PTC) version, **EM3010 DX**, will close after a signal has been applied and removed from the signal lead.

3 GENERAL



A cable to connect the lock is supplied with the lock. This cable has 4 leads:

- Black: - [ground]
- Yellow: + [9V, 250 mA]
- Green: Signal lead [9V, 2,5mA]
- Red: Not used

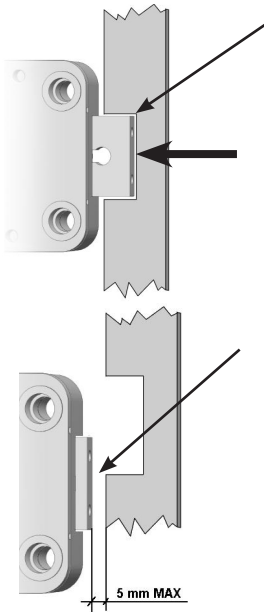
The lock is equipped with a bolt switch. The 3 leads of the bolt switch come out of the lock housing.

- Blue: COM
- Green: NC
- Red: NO

The maximum allowed cable /spindle-hole diameter is 11mm [if located under the lock body].

4 BOLT REQUIREMENTS AND LOCK MOUNTING

The force applied to the lock bolt in locked condition must not exceed 1 kN (p. E. by a preconceived breaking point). If higher force is desired please consult with the manufacturer.



In the LOCKED position, there should be approximately 1 mm clearance between the lock bolt and the cavity in the blocking bar of the boltwork. The lock bolt must move freely into the cavity.

Any bolt attachment should not exceed 0.5 Kg / 1 lb. (equals a force of 5N)

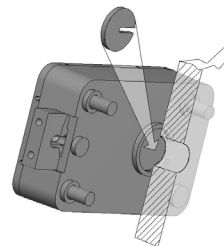
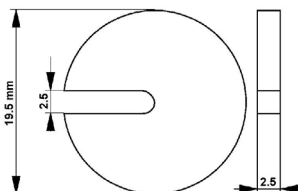
When the lock bolt is retracted, the distance to the blocking bar must not exceed 5 mm.

5 MOUNTING INSTRUCTIONS

Only use supplied screws to mount the lock. Handtighten the screws securely so the lock body is attached firmly to the mounting surface.

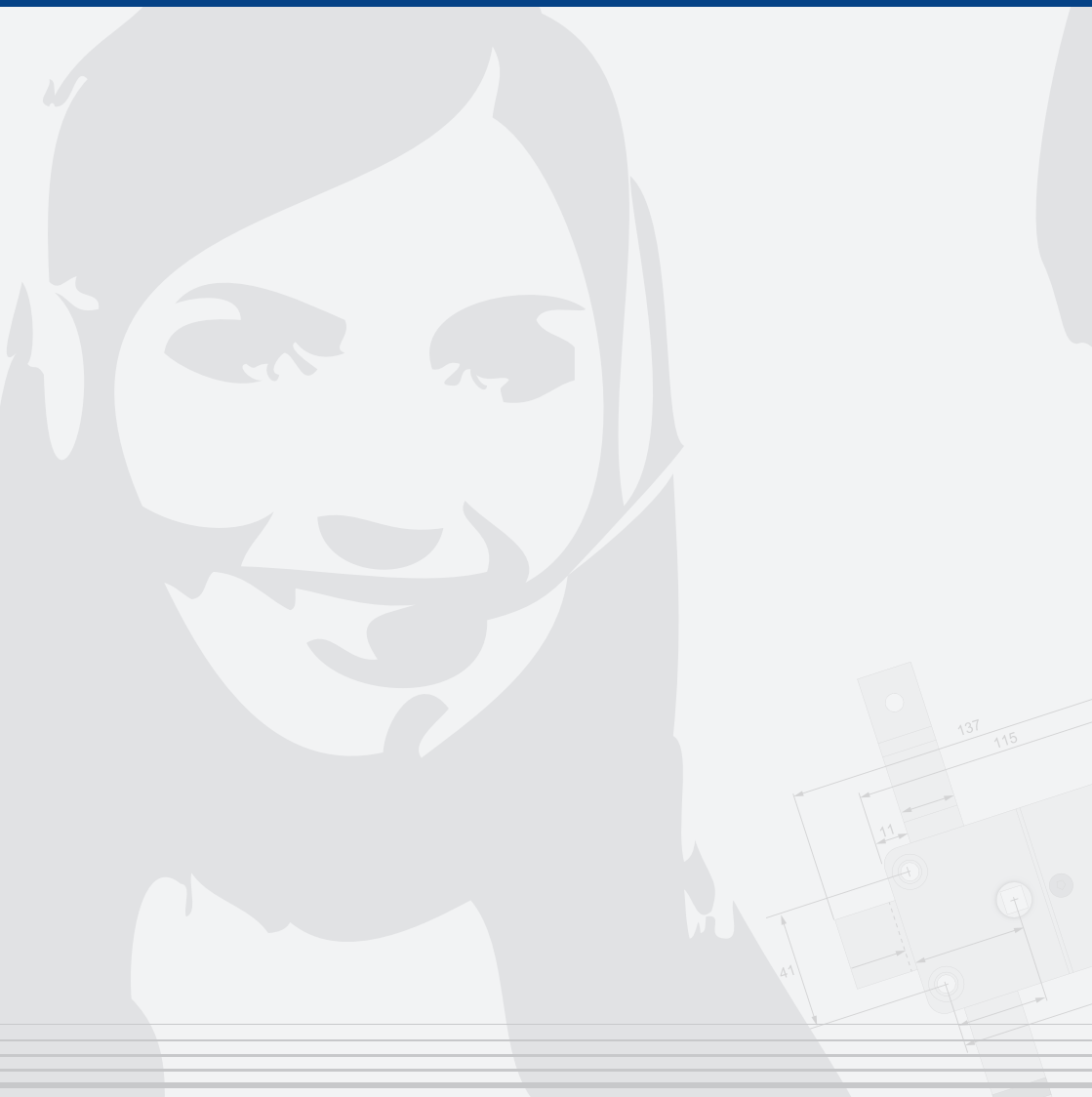
If the DirectXion lock is used in conjunction with another lock, the boltwork must be constructed in a way that the DirectXion secures first.

If a cable /spindle hole is located under the Motor lock, use a suitable drill protection; part number T016. Cable-hole 9-12 mm.



8 NOTES

M•LOCKS



M•LOCKS BV

Vlijtstraat 40 • 7005 BN Doetinchem • The Netherlands • www.m-locks.com