

M•LOCKS

PL3015

**Mounting
instructions
V01 EN**



M•LOCKS BV

Vlijtstraat 40 • 7005 BN Doetinchem • the Netherlands • www.m-locks.com

PL3015



PL3015

1 IMPORTANT INSTRUCTIONS

- **Before mounting the entry unit, please read the instructions carefully.**
- **Exclusively use supplied screws for mounting the entry unit.**
- At the time of delivery, the lock is set to the standard Manager Code of 1 2 3 4 5 6. Change this code immediately to your own choice of Manager Code. Do not use personal or other simple data which can easily be found out for your Manager Code.
- Please keep the code always carefully and protect it against improper use by unauthorized persons.
- The Entry unit PL3015 is only suitable for non-rotatable fixed mounting.

2 CHARACTERISTICS

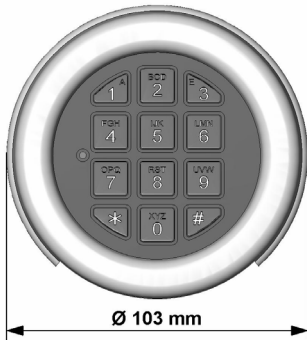
PL3015 Metal housing chrome, with integrated battery compartment, with LED

The integrated battery compartment in the bottom of the entry unit opens by moving a slider. Cable length is approximately 30 cm.

The input unit has two LEDs to illuminate the keyboard. To turn on the LED, please press the



3 DIMENSIONS

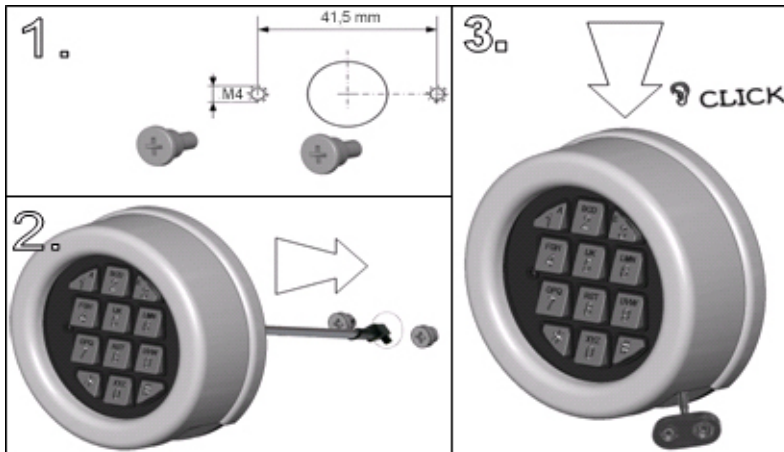


The diameter of the cable hole should be minimum 9 mm, maximum 12 mm. The hole must be de-burred well to avoid damage to the cable.



Similar to picture.

4 MOUNTING INSTRUCTIONS



1. Affix the two mounting adapter screws (M4) hand tied.
2. Route the cable through the cable hole and slide the unit on the mounting adapters. The back of the unit must touch the door surface.
3. Control cable routing, then push the unit down until it snaps on positively.

The entry unit can now not be removed!

Connect one battery to the battery clip. Only use new 9V ALKALINE Duracell / Duracell Industrial- or Energizer batteries.

M•LOCKS



M•LOCKS BV

Vlijtstraat 40 • 7005 BN Doetinchem • The Netherlands • www.m-locks.com