

## Technical manual Mounting Instructions



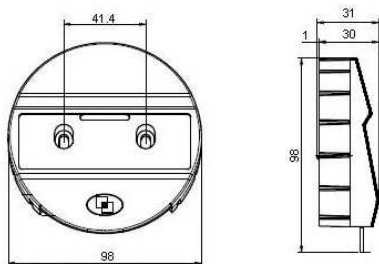
- T6530 with blue foil keys**
- T6530 DL with Dallas reader and blue foil keys**
- T6530 B with black foil keys**
- T6530 DLB with Dallas reader and black foil keys**

### Optional for use with Straightbolt locks:

**T9090 turnable backplate**

### DIMENSIONS

The terminal for the electronic key (Dallas Key) is located in the front, over the keypad (only models T6530 DL and T6530 DLB).



Fixing of the input pad:

- 1 Stationary
- 2 Turnable

### 1. STATIONARY MOUNTING

The diameter of the cable hole should be minimum 9 mm, maximum 12 mm. The hole must be deburred well to avoid damage to the cable.

- Lift the pad so that you can see mounting holes.
- Let lock's connecting cable pass through the hole on safe's door.
- Insert and fix the two inbus screws, paying attention to cables, they have not to be squashed by housing and let battery cables have easy access.
- Drill (3,5 mm) the screw heads so that tools don't work for dismounting (due to EN1300)

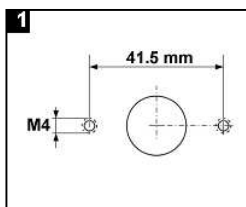


Clean the keypad surface.

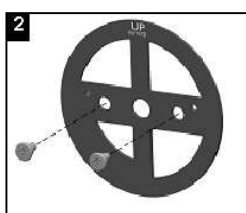
Remove adhesive film from pad and line up margins carefully, before fixing it.

## 2. TURNABLE ENTRY UNIT only with T9090

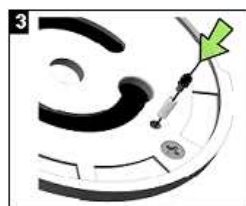
The diameter of the cable hole should be minimum 9 mm, maximum 12 mm. The hole must be deburred well to avoid damage to the cable.



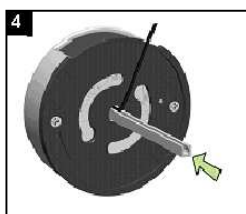
Prepare the mounting and cable holes according to picture



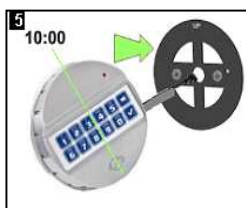
- Hold the bearing plate in a way against the mounting surface that "UP" is readable on top.
- Affix the plate with the two mounting adapter screws (M4), hand tied.
- Drill (3,5 mm) the screw heads so that tools don't work for dismounting (due to EN1300)



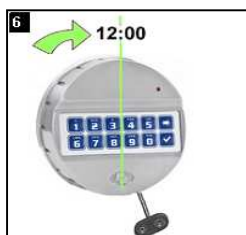
Insert first the spring and pin into the hole on the back cover



Insert the grooved shaft all the way into the entry housing  
Route the cable through the cable hole



Hold the unit at the (approximately) 10:00 o'clock position and slide it on the mounting adapters.



Turn unit clockwise until it clicks into a stationary position at 12:00.

Remove adhesive film from pad and line up margins carefully, before fixing it.

Connect the cable to the lock at the "ENT" position and mount the lock.

Connect one (1) battery to the battery clip. Only use 9V ALKALINE Duracell Procell- or Energizer batteries.