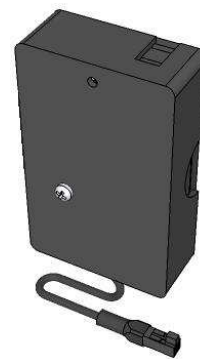


### ST7070

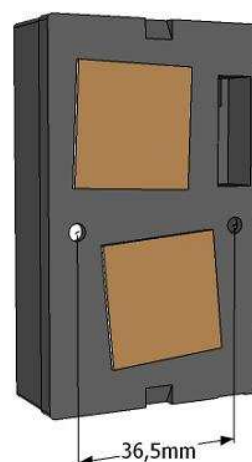
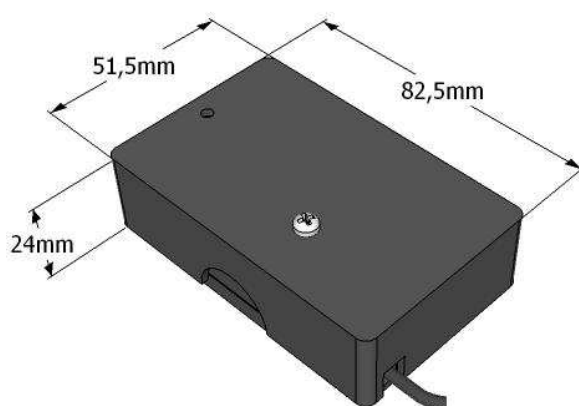
Battery / alarm box for 9V batteries

#### CHARACTERISTICS

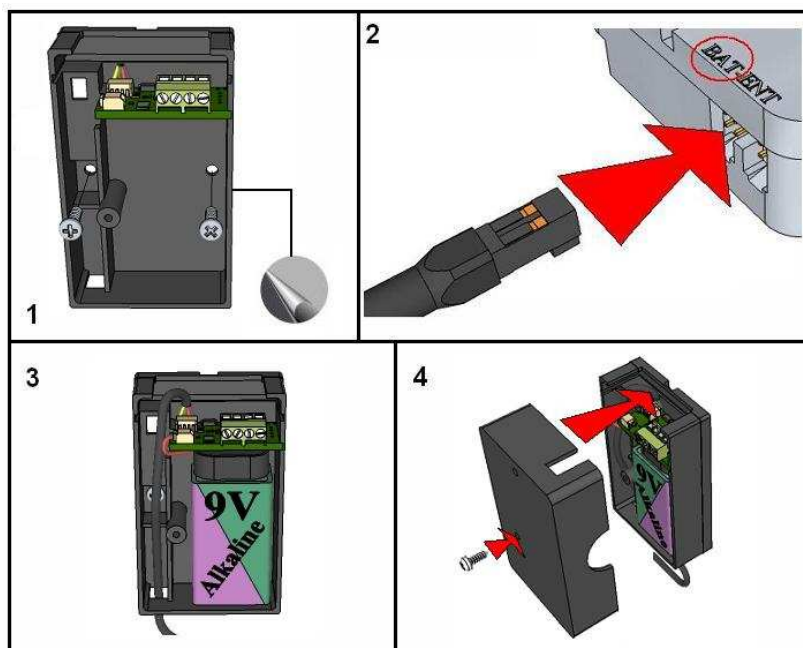
The ST7070 Interface box replaces the regular battery box when silent alarm signal and/or remote signal in capability is needed. The box takes a standard 9V battery and connects to BAT connection on lock PCB.



#### DIMENSIONS / MOUNTING INSTRUCTIONS



When positioning the boxes make sure that no moving part of boltwork will interfere with the box or cable when in use. Cable length is approximately 400mm (usable). Prepare cut-out and fixing holes and clean the surfaces.



Peel the cover off the adhesive tape at back of the base and fit with 2xM3 screws (1). Route and connect cable to BAT connection on lock (2) making sure it snaps into position. **Picture is for illustration only, BAT connection can be placed differently depending on lock fitted.** Connect external connections as needed (see connections on next page). Tie up loose cables in a professional way. Fit and connect one 9V, Duracell or Energizer, ALKALINE battery in base (3). Attach lid and secure it with the supplied screw (4).

### CONNECTIONS:

The ST7070 has the following connections:

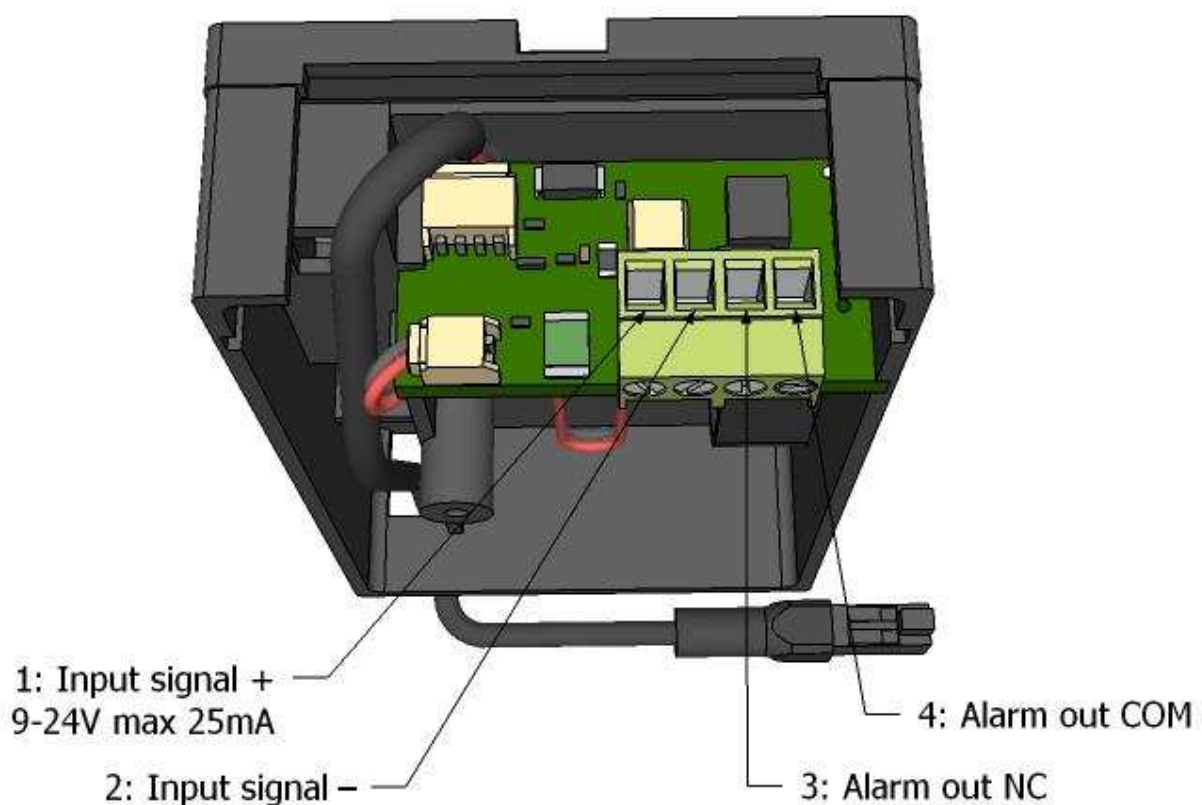
- 4-wire connector for connection to lock
- 2-wire connector for connection to battery (9V)
- 4-screw connection block for:
  - a. Disable signal input (9-25V max 25mA)
  - b. Silent alarm output (max 25V DC, 100mA)

The lock- and battery-connector are M-Locks standard.

The disable signal input will deny entry to lock if applied (Multi Level software only). If a code is entered it is confirmed by a double signal followed by a long signal.

The alarm output will **open** for 0,5 seconds if silent alarm code is entered on keypad (last digit +1) and options have been chosen when lock is set up (Multi Level software only).

Be aware that the ST7070 box can not be powered remotely (by battery in keypad or emergency terminals).



Never use excessive force when tightening the screw connectors. Try all functions several times after box has been connected. Use only Duracell or Energizer ALKALINE 9V batteries.